



LarFlex Type 75 Rubber Check Valves

The LarFlex 75 is designed to be the answer to enclosed body check valve requirements for slurry applications. It requires no external power sources, thereby making operational costs obsolete. The valve's unique design means there are no mechanical parts to break down, therefore reducing maintenance costs. The LarFlex 75 easily allows flow of abrasive materials such as raw sewage, sludges or slurries. The elastomers flexible design allows the media to flow through without significant head losses and will seal around solids trapped in the valve. The LarFlex 75 valves are versatile, can be installed horizontally or vertically and are designed within industry standards for flange size and drilling.

Construction

The solid carbon steel body and one-piece rubber valve provides lasting durability. The unique feature is the pull-through design which provides a tamper proof design required by Homeland Security Issues. The two flush ports allow for easy cleaning of the valves interior body.

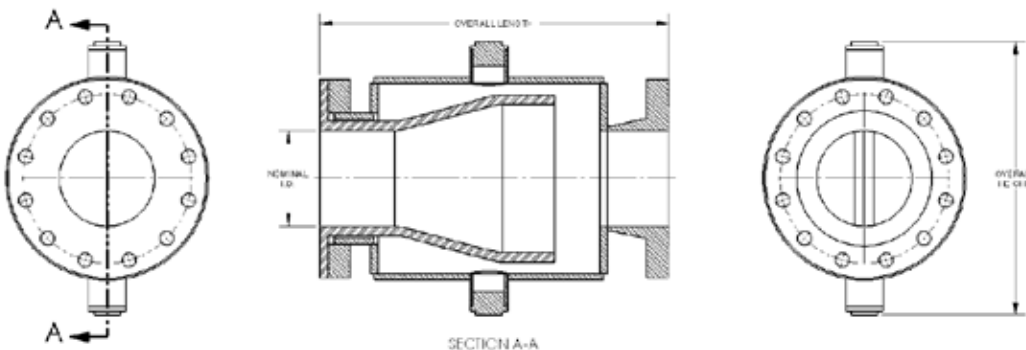


Unique features

- Maintenance free
- Will seal even with solids entrapment
- Designed to withstand wear
- Quiet operation, no water hammer
- 100% backflow prevention
- Tough enough for abrasive slurries

Applications

- Potable water towers
- Stand pipes
- Sewer interceptors
- Wet wells
- Mine tailing pipe line
- Out falls
- Dredging
- Scrubber Pipe Systems
- Outfall Lines
- Slurries



Type 75 Dimensions

Pipe Size ID (in)	D Length	C Height	W Width	Working Pressure (psig)	Pipe Size ID	D Length	C Height	W Width	Working Pressure (psig)
1	4.5	5.75	4.25	125	8	21	19	13.5	100
1.25	5.5	6	4.5	125	10	23	23	16	75
1.5	6.5	6.5	5	125	12	25	27	19	75
2	8.5	8	6	125	14	29	28.5	21	50
2.5	9.5	9.25	7	125	16	33	30	25	50
3	11.5	9.75	7.5	125	18	38	33.5	25	50
4	11.75	11.75	9	125	20	41.5	37	27.5	50
6	19	14.5	11	100	24	49.5	48	32	5

Available Elastomers:

- EPDM
- Nitrile
- Natural Rubber
- Butyl
- Neoprene
- NSF61 approve material for Potable Water requirements



Flowrox, INC.
808 Barkwood Ct Suite N
Linthicum, MD 21090
Tel. 410.636.2250

www.flowrox.com
info@flowrox.com

