



Flowrox Packaged Pumping Systems™

Comprehensive engineered packages to ensure simple start-up on site

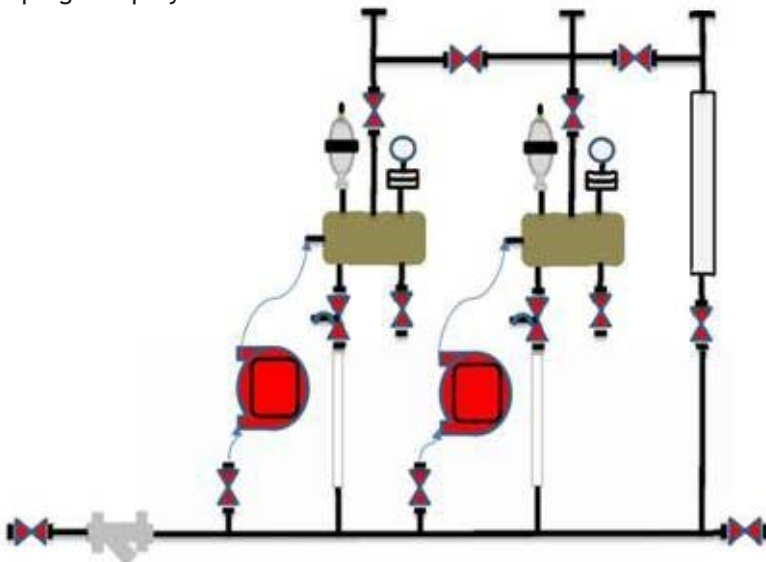
Flowrox Packaged Pumping Systems™ are engineered units equipped with simple site connections to ensure quick and easy installation and start-up. While the system is designed for easy use, it can be customized to suit your needs. Flowrox Packaged Pumping Systems™ provide accurate and repeatable flow while reducing maintenance time and cost.

These systems have many integrated control options to meet facility control philosophy requirements. Flowrox offers a wide variety of pumps to meet the demands of your application such as rolling peristaltic pumps and progressive cavity pumps.

Save time, maintenance resources and enhance safety

Integrated containment offers superior operational safety in aggressive chemical applications. One of the many convenient features of the Flowrox Packaged Pumping Systems™ is the pin connector hook up. It allows quick disconnection between the pump and skid mounted terminal box for control wiring, allowing pumps to be removed for calibration or cleaning. Easy start-up and installation on site paired with highly efficient and innovative peristaltic pumps results in a superior one-stop-shop Packaged Pumping Systems™.

Just plug and play!



Flowrox Packaged Pumping Systems™ diagram. All necessary connections are mounted inside the skid.



CUSTOMER BENEFIT

Low total cost of ownership



Easy customization



Minimal wear items



High cycle or elevated operating temperatures



Long service intervals



Low energy consumption





Comprehensive engineered packages to ensure simple start-up on site ”

Auxiliaries

Each pumping system can be equipped with the following features:

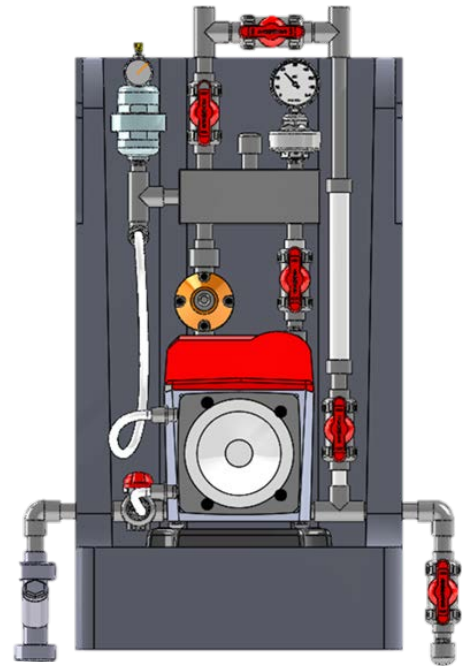
- Wye strainer
- Isolation ball valves
- Suction/discharge unions
- Calibration column
- Auxiliary manifold block
- Flared quick liquid pump connections
- Pressure relief valve
- Pressure gauge with diaphragm isolator
- Pulsation dampener
- Flush valves
- Control/power termination Panel/Nema4x
- Pin connector, quick disconnect control cables

Construction

- Rotationally molded polyethylene
- Integrated spill containment and drain port
- Welded steel packages available
- Welded polyethylene systems available
- Heavy duty system lift kits available
- Spray shield (options)

Common Applications Include:

- Sodium hypochlorite
- Lime slurry
- Alum
- Ferric chloride
- Sodium bisulfite
- Reagents
- Sodium hydroxide
- Magnesium hydroxide
- Polymers
- Glycol
- Activated carbon
- Defoaming agents



Simplex Wall Mount Pumping System is also available as Duplex (two pumps), Triplex (three pumps) and Quad (four pumps) - adaptable to your process specifications.



OUR CUSTOMER: Camden Water Department
MEDIUM: Chlorination and dechlorination
OBJECTIVE: Eliminating chemical spills



A water treatment plant located in Camden, TN, USA, added a Flowrox chlorination and dechlorination pumping package to their process. Flowrox worked with the engineering company to design and install the pumping systems. The robust design and the easy to use pump controls resulted in a seamless installation for the contractor. The added benefit of the integrated hose leak detection and wall mount with spill containment lip on the skid will help Camden Water Department to eliminate chemical spills. Flowrox delivered a complete Packaged Pumping Systems™ including the pumping systems, auxiliaries and tanks.



Flowrox Oy
P.O. Box 338, FI-53101 Lappeenranta
Finland
Tel. +358 201 113 311

www.flowrox.com
info@flowrox.com

