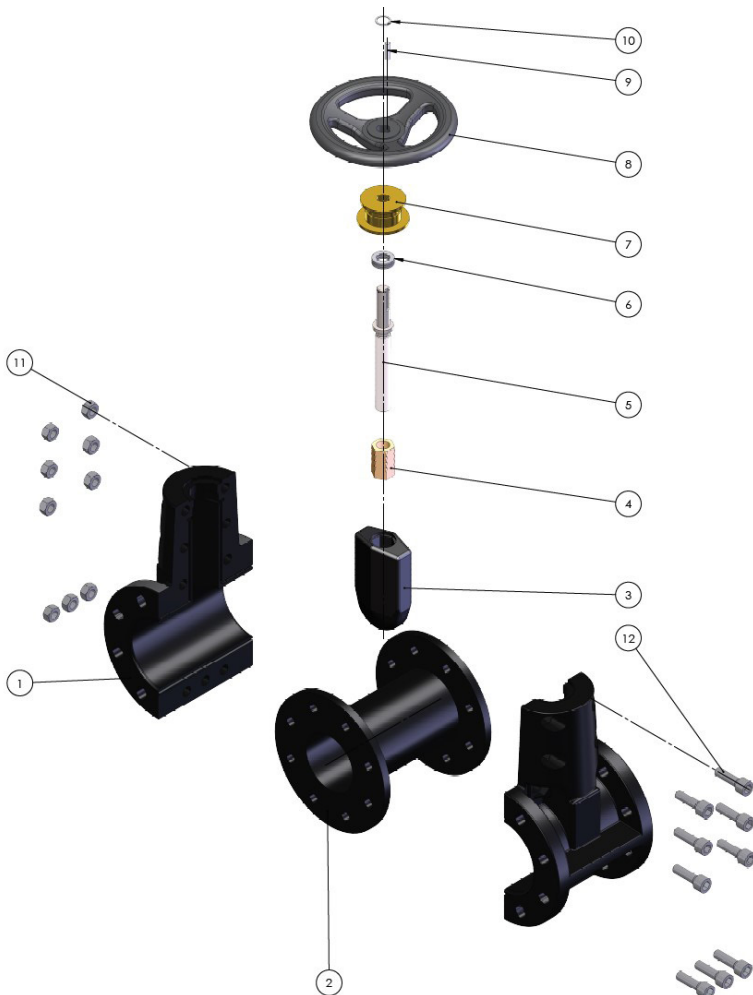




PVEG General Line Pinch Valves

EXPLODED VIEW OF PVEG VALVE WITH MANUAL ACTUATOR

Part	Description	Part	Description
1	Body	7	Support bushing
2	Sleeve	8	Hand wheel
3	Pusher	9	Key
4	Nut bushing	10	Retaining ring
5	Stem	11	Hex nut
6	Thrust bearing	12	Hex socket screw



TECHNICAL DATA

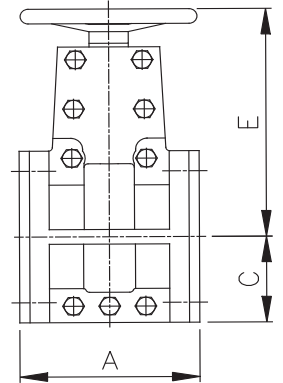
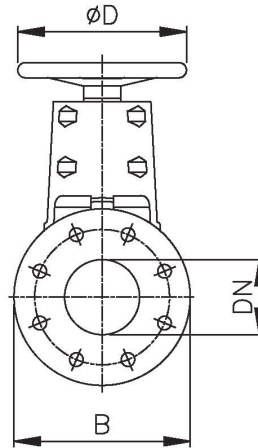
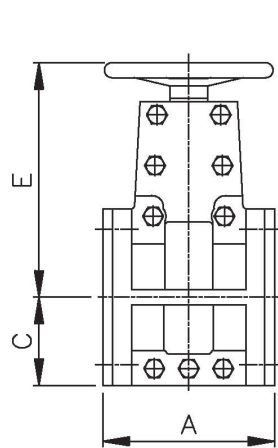
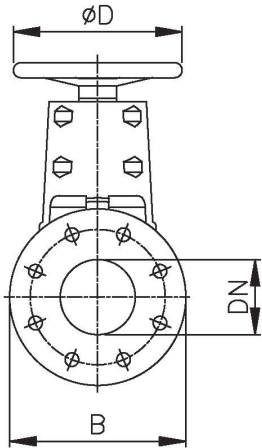
- Corrosion resistant, lightweight plastic body (polyamide)
- Bubble-tight shut-off
- Actuators: manual & pneumatic
- Temperature range: 32 °F - 158 °F
- Sizes up to 150 PSI



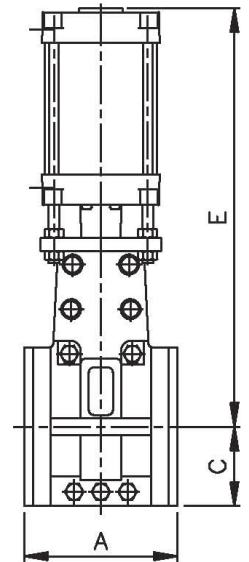
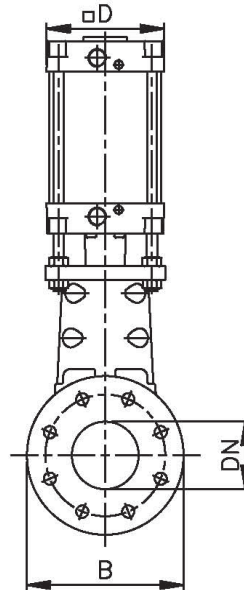
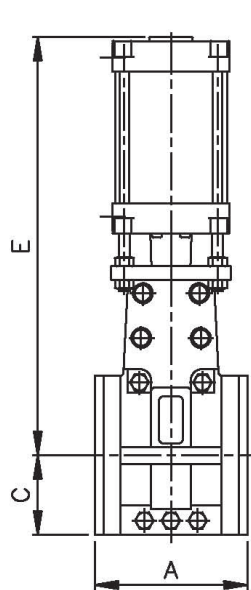
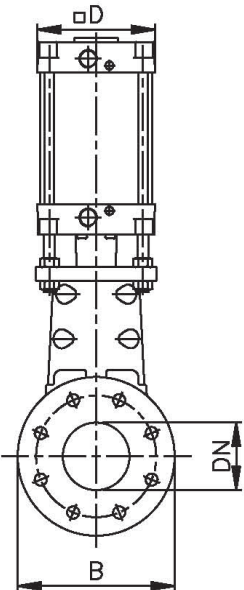


MAIN DIMENSIONS OF PVEG VALVES

MANUAL



AUTOMATIC



Valve size (PVEG) M&A	A	B	C	D		E		Weight (lbs)		Max Pressure (PSI)	
				M	A	M	A	M	A	M	A
2	7	6.5	3.2	6.9	4.6	9.0	17.1	14	25	150	75
3	8	8.2	4.1	7.9	5.4	11.4	21.5	18	40	150	75
4	9	9.3	4.6	8.9	6.9	12.6	24.8	25	55	150	75
6	16	11	5.5	15.7	10.6	17.7	33.0	64	163	150	75

Bigger sizes and higher pressures on request. All dimensions in inches.

Information without engagement. All rights to changes without prior notice reserved.



Neles Finland Oy
P.O. Box 26
FI-53101 Lappeenranta, Finland
Tel. +358 (0)01 417 5000

Neles USA Inc.
808 Barkwood Court, Suite N
Linthicum, MD 21090, USA
Tel. +1-410-636-2250

www.flowrox.com
sales-us@flowrox.com

