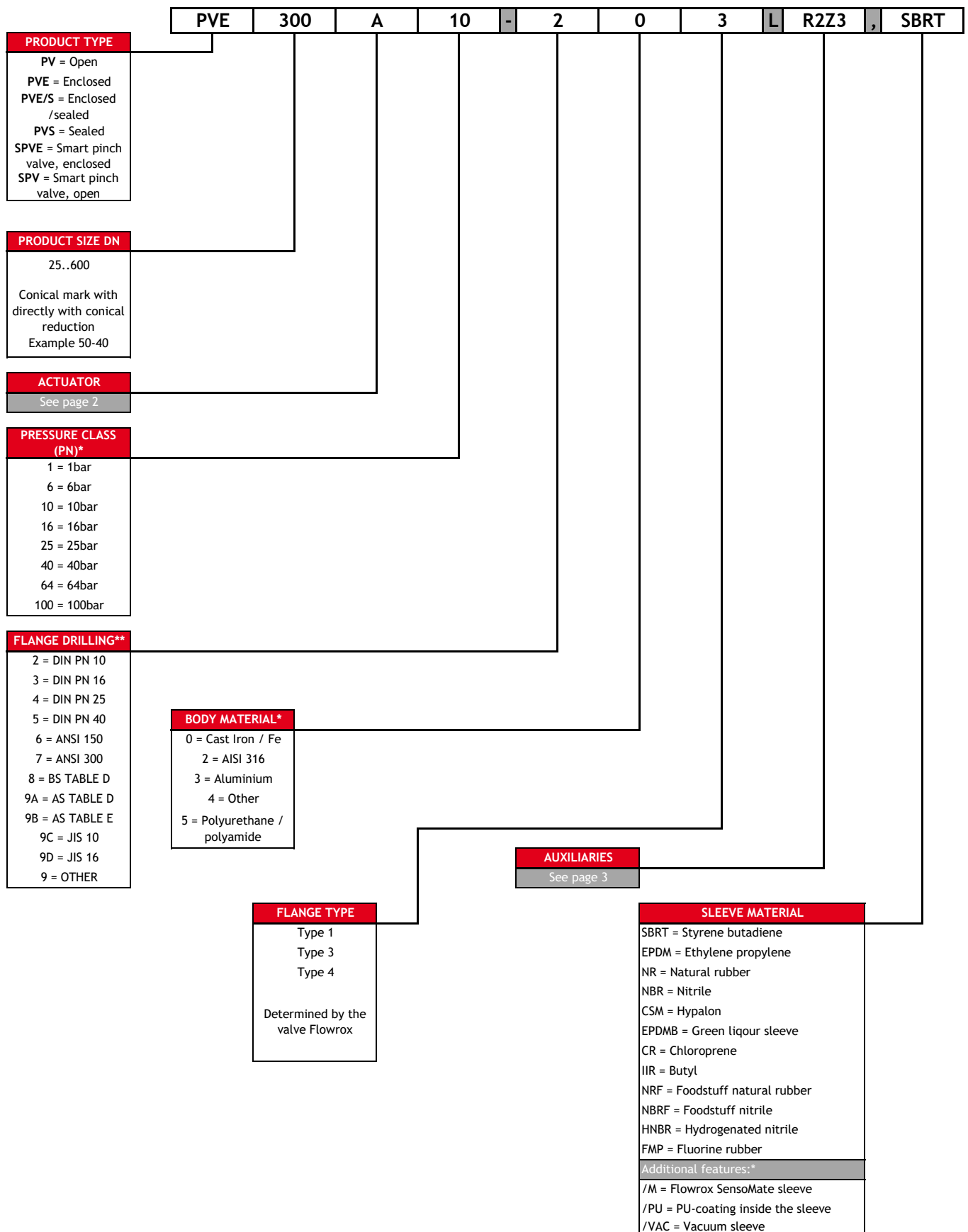


## FLOWROX PINCH VALVE MODEL SELECTION GUIDE



\* Some restrictions apply. Contact Flowrox.

\*\* Not available on all sizes.

## PINCH VALVE ACTUATORS

AKU1C PNEUMATIC				EB ELECTRIC		H HYDRAULIC	MG MANUAL
CYLINDER	MANUAL OVERRIDE	POSITIONER	OPTIONS	TYPE	VOLTAGE RANGE	TYPE	TYPE
A = Pneumatic cylinder	BLANK=NONE	BLANK=NONE	BLANK=NONE	E = Electric On-Off AUMA Norm	BLANK= 400V/50hz	H = Hydraulic	M = Manual handwheel
A15 = Pneumatic with stainless piston rod, tie rods and painted cylinder	B = Manual override	K = Positioner Neles ND9000 series	U1C= With pneumatic spring FAIL CLOSE	EP = Electric On-Off with feedback unit EWG 01.1, AUMA	B = 380V/50hz	HA = Intergated Solenoid valve 24 VDC	MG = Manual with bevel gear
A25 = Pneumatic "Stainless" no painting		KL = Standard Positioner with special auxiliaries or other brand than Flowrox Selected Standard	U2C= With pneumatic spring (Pressure switch) FAIL CLOSE c)	ES = Electric On-Off AUMA-Matic	C = 440V/50hz	HB = Intergated Solenoid valve 110VAC	MCW = Chainwheel
		KT = Position feedback from cylinder mounted transmitter b)	U20= With pneumatic spring (Pressure switch) FAIL OPEN c)	EO = Electric On-Off with positioner, Aumatic	D = 525V/50hz	HC =Intergated Solenoid valve 230VAC	
		VC = With mechanical spring FAIL CLOSE		EL = Electric (Other)	E = 460V/60hz	HP = Hydraulic positioner	
		VO = With mechanical spring FAIL OPEN			N = Other	HL = Hydraulic (Other)	

a) KF option cannot be used with cylinder type A15, A25 or Manual override.

b) KT option Available soon.

c) U2C/U20 not available for positioners.

## PINCH VALVE AUXILIARIES

MARKING	DESCRIPTION	EXTRA INFO	APPLICABLE ACTUATOR	
B	Pressure Booster in air supply	Pressure booster determined by Flowrox, used to increase the supply air pressure to secure enough force for pneumatic cylinder.	PNEUMATIC	★
F	Filter Regulator + gauge	Filter Regulator + Gauge Flowrox selected model.	PNEUMATIC	★
F1	Filter Regulator + gauge (stainless steel AISI 316)	Filter Regulator + Gauge Flowrox selected model. FESTO PCR P G1/4 & G1/2	PNEUMATIC	★
F5	Filter Regulator OR Filter Regulator+ gauge	Filter Regulator OR Filter Regulator+ gauge (Non-standard)	PNEUMATIC	
H	Hydraulic Handpump (For Hydraulic only)	Manual hydraulic handpump for hydraulic actuators H only.	HYDRAULIC	★
J1	Junction box small (Flowrox Standard)	Junction box small, for limit switches or solenoid valve, IP66, plastic, 2 pcs M12x1.5 and 1 pc M20x1.5, pre-wired.	ANY	★
J2	Junction box large (Flowrox Standard)	Junction box large, for limit switches and solenoid valve, IP66, plastic, 4 pcs M12x1.5 and 1 pc M20x1.5, pre-wired.	ANY	★
J4	Junction Box (Non-Standard)	Junction box out of Flowrox standard scope specification clarified on the proposal and under valve serial number.	ANY	
P1	Stainless steel fittings + Corrosion resistant tubing	High temperature & corrosion resistance	PNEUMATIC	
P2	AISI 316 Fitting and piping	Stainless steel fitting and piping	PNEUMATIC	
Q	Quick exhaust valve	Quick exhaust valve to maximize the speed of cylinder.	PNEUMATIC	★
R	Readiness for ind. Limit switches	Readiness for d18mm inductive limit switches.	ANY	★
R1	AC/DC (18mm cylindrical switch) (Flowrox Standard)	AC/DC, 2-wire type, (24...240VAC / 24...240VDC) Flowrox selected model	ANY	★
R2	DC, NPN (18mm cylindrical switch) (Flowrox Standard)	DC, 3-wire type, PNP (12...24V) Flowrox selected model	ANY	★
R3	DC, NPN (18mm cylindrical switch)(Flowrox Standard)	DC, 3-wire type, NPN (12...24V) Flowrox selected model	ANY	★
R5	Limit switch (Non-Standard)	Limit switch out of Flowrox standard scope specification clarified on the proposal and under valve serial number.	ANY	
S	Magnetic limit switches (Flowrox Standard)	Magnetic limit switches, attached to aluminium pneumatic cylinder actuators. Cylinder fitted with magnetic piston.	PNEUMATIC	★
S5	Magnetic limit switches (NON-Standard)	Magnetic limit switches, attached to aluminium pneumatic cylinder actuators. Cylinder fitted with magnetic piston.	PNEUMATIC	
T	Mechan. Limit switches (Flowrox Standard)	Mechanical limit switches Flowrox selected model	ANY	★
T5	Mechan. Limit switches (NON-Standard)	Mechanical limit switches (Non-standard) Consult with Flowrox	ANY	
Z1	Solenoid valve, 24VDC, Monostable (Flowrox Standard)	Solenoid valve 24 VDC (for pneumatic actuator) with necessary tubing Flowrox selected model, <b>monostable (Single coil)</b> .	PNEUMATIC	★
Z1B	Solenoid valve, 24VDC, Bistable (Flowrox Standard)	Solenoid valve 24 VDC (for pneumatic actuator) with necessary tubing Flowrox selected model, <b>Bistable (Double coil)</b> .	PNEUMATIC	★
Z2	Solenoid valve, 230V, 50/60Hz, Monostable (Flowrox Standard)	Solenoid valve 230V - 50/60Hz (for pneumatic actuator) with necessary tubing Flowrox selected model, <b>monostable (Single coil)</b> .	PNEUMATIC	★
Z2B	Solenoid valve, 230V, 50/60Hz, Bistable (Flowrox Standard)	Solenoid valve 230V - 50/60Hz (for pneumatic actuator) with necessary tubing Flowrox selected model, <b>Bistable (Double coil)</b> .	PNEUMATIC	★
Z3	Solenoid valve, 110V, 50/60Hz, Monostable (Flowrox Standard)	Solenoid valve 110V, 50/60Hz (for pneumatic actuator) with necessary tubing Flowrox selected model, <b>monostable (Single coil)</b> .	PNEUMATIC	★
Z3B	Solenoid valve, 110V, 50/60Hz, Bistable (Flowrox Standard)	Solenoid valve 110V, 50/60Hz (for pneumatic actuator) with necessary tubing Flowrox selected model <b>Bistable (Double coil)</b> .	PNEUMATIC	★
Z5	Solenoid valve, 24VDC, Monostable (Non-Standard)	24 VDC <b>monostable (Single coil)</b> solenoid valve out of Flowrox standard scope specification clarified on the proposal and under valve serial number.	PNEUMATIC	
Z5B	Solenoid valve, 24VDC, Bistable (Non-Standard)	24 VDC <b>Bistable (Double coil)</b> solenoid valve out of Flowrox standard scope. To be specified on the proposal and under valve serial number.	PNEUMATIC	
Z6	Solenoid valve, 230V, 50/60Hz, Monostable (Non-Standard)	230V 50/60Hz <b>monostable (Single coil)</b> solenoid valve out of Flowrox standard scope. To be specified on the proposal and under valve serial number.	PNEUMATIC	
Z6B	Solenoid valve, 230V, 50/60Hz, Bistable (Non-Standard)	230V 50/60Hz <b>Bistable (Double coil)</b> solenoid valve out of Flowrox standard scope. To be specified on the proposal and under valve serial number.	PNEUMATIC	
Z7	Solenoid valve, 110V, 50/60Hz, Monostable (Non-Standard)	110V 50/60Hz <b>monostable (Single coil)</b> solenoid valve out of Flowrox standard scope. To be specified on the proposal and under valve serial number.	PNEUMATIC	
Z7B	Solenoid valve, 110V, 50/60Hz, Bistable (Non-Standard)	110V 50/60Hz <b>Bistable (Double coil)</b> solenoid valve out of Flowrox standard scope. To be specified on the proposal and under valve serial number.	PNEUMATIC	
X	Must be specified	Additional auxiliary equipment not listed.	ANY	

★ Flowrox standard options